



独具人性关怀与专业热忱的销售服务体系

THE UNIQUE HUMANE CARE
AND PROFESSIONAL HOT ENTHUSIASTIC
SALES SERVICE SYSTEM



浙江恒齿传动股份有限公司
ZHEJIANG EVERGEAR DRIVE CO.,LTD.

浙江省温州市平阳县万全镇万顺路199号
No. 199, Wanshun Road, Wanquan Town,
Pingyang County, Wenzhou City, Zhejiang Province

电话(TEL): 0577-63706661 63706662 63706663
传真(FAX): 0577-63186666 63706669
E-mail: zhejiang@evergear.com.cn
www.evergear.com.cn

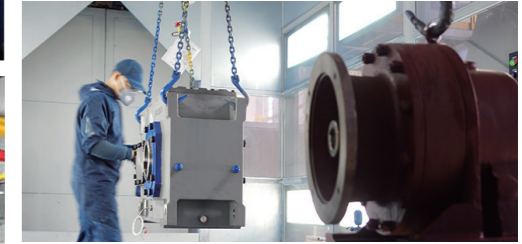


环保行业
传动方案专家

DRIVE SOLUTION
EXPERT IN
ENVIRONMENTAL
PROTECTION
INDUSTRY



EVERGEAR[®]
恒齿传动



先进的生产设备 是确保产品质量最好的物质基础

环保-污水处理 / 化工搅拌 / 新能源汽车 / 钢铁冶金 / 筑路机械 / 包装机械 / 塑料机械
物流自动线 / 光伏行业 / 电力水泥设备 / 动车轮毂设备 / 纺织设备 / 港口起重设备 / 金属拉丝设备
盾构机 / 啤酒饮料设备 / 粮食机械设备 / 电子专用设备 / 煤炭输送...

environmental protection sewage treatment / chemical mixing / new energy vehicles / steel metallurgy
road construction machinery / packaging machinery / plastic machinery / automatic logistics lines / photovoltaic industry
power cement equipment / wheel hub equipment / textile equipment / port lifting equipment
metal drawing equipment / Shield boring machine / Beer and beverage equipment
Grain machinery and equipment / Electronic special equipment / Coal transportation

COMPANY BRAND:

公司品牌:



浙江恒齿传动股份有限公司是一家集减速机产品研发、生产制造、销售服务于一体的知名企业。

公司主导系列产品有：ER、EK、EF、ES、EH/EB、EQ、EZ等12种之多，配套功率0.18-4000KW，数万种传动比，并通过 ISO9001 质量管理体系、ISO14001 环境管理体系、ISO45001 职业健康安全管理体系和欧盟 CE 认证，以高品质著称的“恒齿”产品供广大客户选择。

公司坚持以科技创新为本，具有“省级企业研究院”称号，致力于国际、国内减速机设备的研制、开发和数字化设计，目前已取得 10 多项发明专利，70 多项实用新型专利。

公司作为中国减速机标准化委员会委员单位已组织制定多项行业标准，获评“国家高新技术企业”“品字标浙江制造”“浙江省科技型企业”“浙江省专利示范企业”“中国行业减速机十大品牌”“浙江省企业成长之星”“省级 AAA 级重合同守信用企业”、“省专精特新中小企业”“省级知识产权示范企业”“浙江制造精品名单”“生产制造方式转型示范项目名单”等多项荣誉称号。

我们秉承“恒之以心，齿之以恒”的理念，热忱欢迎国内外新老朋友，莅临恒齿公司参观指导。

Zhejiang EVERGEAR Drive Co.,Ltd is a national high-tech enterprise that integrates the research and development, production, manufacturing, sales and service of gear reducer products.

Company Leading products: ER, EK, EF, ES, EH/EB, EQ, EZ, etc twelve series. Motor power range: 0.18 ~ 4000KW, nearly tens thousands of ratios. The company has passed ISO9001 quality management system, ISO14001 environmental management system, ISO45001 occupational health and safety management system, and CE certification. Serial "EVERGEAR" products are for your choice.

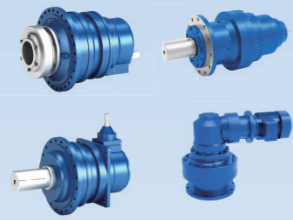
The company adheres to technological innovation and has the title of "Provincial Enterprise Research Institute". It is committed to the research, development, and digital design of international and domestic reducer equipment. At present, it has obtained 10 invention patents and 70 utility model patents.

As a member unit of the China Reducer Standardization Committee, it has established many industry standards, the company has been awarded the titles of "National High-tech Enterprise", Label certification of Zhejiang Made- "品" (product), "Zhejiang Science and Technology Enterprise", "Zhejiang Patent Demonstration Enterprise", "Top Ten Chinese Reducer Brands", "Zhejiang Province Growing Star Enterprise", "Provincial AAA Level Contract Abiding and Trustworthy Enterprise", "Provincial specialized, Refined, and New small and Medium Enterprise", "Provincial Intellectual Property Demonstration Enterprise", "List of quality products made in Zhejiang" "List of demonstration projects for transformation of production and manufacturing methods" etc honorary titles.

We adhere to the concept of "Persist in heart, Persistent gears", we warmly welcome new and old friends from domestic and abroad to visit EVERGEAR for guidance.

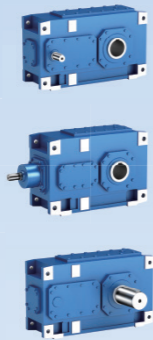
EQ

SPIRAL BEVEL
GEAR REDUCER
行星齿轮减速机



EH EB

HIGH POWER
REDUCER
大功率齿轮减速机



ER

HELICAL
GEAR MOTOR
斜齿轮硬齿面减速机



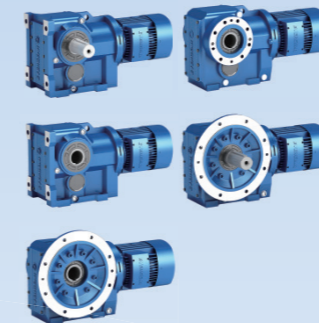
EF

PARALLEL SHAFT
HELICAL GEAR MOTOR
平行轴斜齿轮减速机



EK

HELICAL-BEVEL
GEAR MOTOR
弧齿锥齿轮硬齿面减速机



ES

HELICAL-WORM
GEAR MOTOR
蜗轮蜗杆减速机



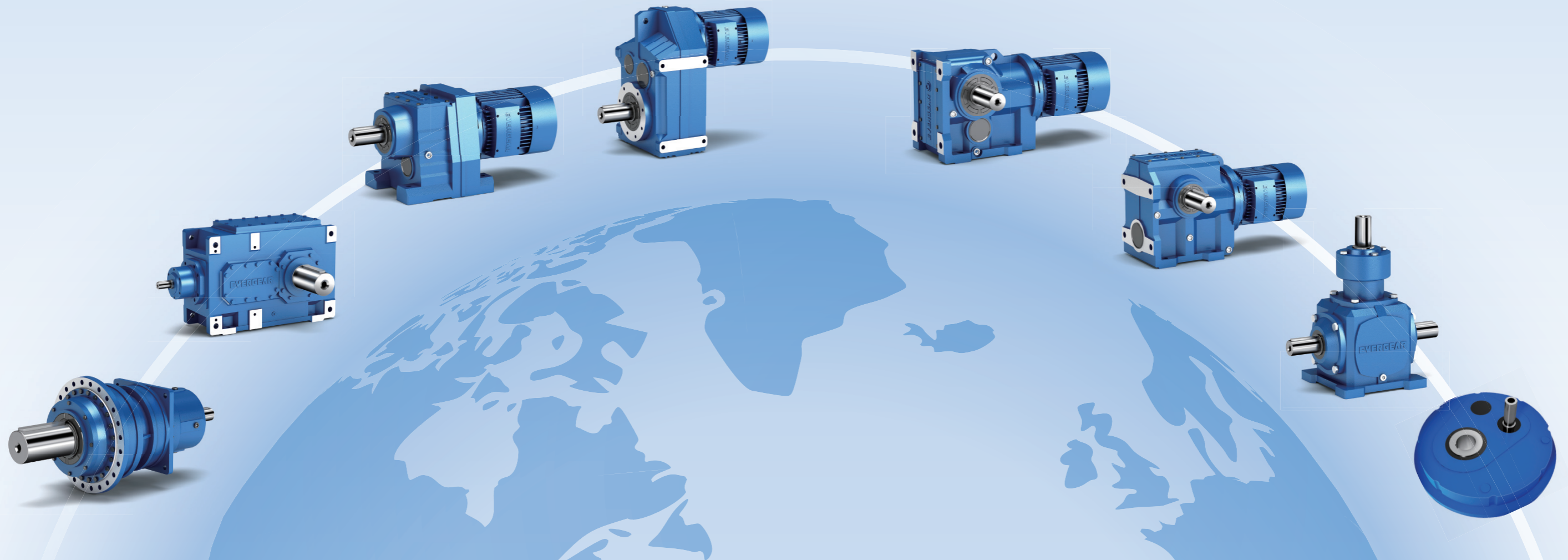
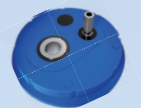
EZ

SPIRAL BEVEL
GEAR MOTOR
弧齿锥齿轮减速机



ZGY

SHAFT-MOUNTED
REDUCER
悬挂式减速机



EH/EB HIGH POWER REDUCER

大功率齿轮减速机

传动比:
1.25~450

输出转矩:
最大 900KN.m

电机功率:
2.2~5366kw

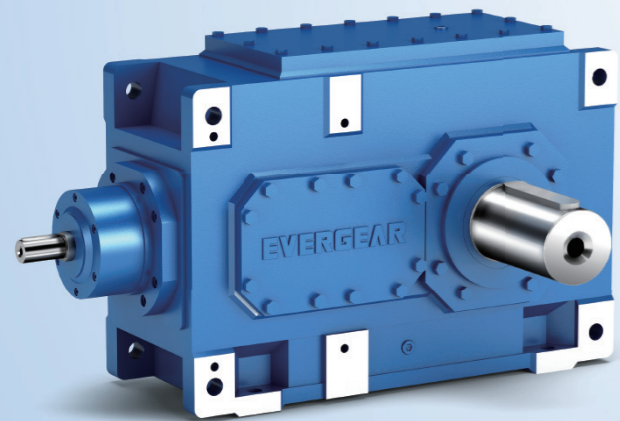
安装形式:
底脚安装 / 轴装安装

Ratio:
1.25~450

Output Torque:
up to 900KN.m

Motor Power:
2.2~5366kw

Mounted way:
foot-mounted / shaft mounted



EQ PLANETARY GEAR REDUCER

行星齿轮减速机

传动比:
25~4000

输出转矩:
22~2600KN.m

电机功率:
0.19~12934kw

安装形式:
底脚安装 / 法兰安装 / 轴装安装

Ratio:
25~4000

Output Torque:
22~2600KN.m

Motor Power:
0.19~12934kw

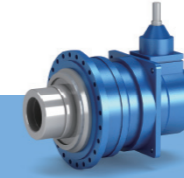
Mounted way:
foot-mounted / flange mounted / shaft mounted



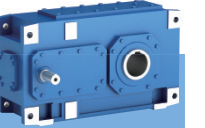
撕碎机 / 撕碎设备 Shredder/Shredder equipment

垃圾破碎机是破碎机的一种，用途广泛，适用于破碎电子垃圾，医疗垃圾，餐厨垃圾，工业垃圾，生活垃圾等各种固废废弃物。
The waste shredder is a kind of crusher and is widely applied for crushing various solid wastes such as electronic waste, medical waste, kitchen waste, industrial waste and domestic waste.

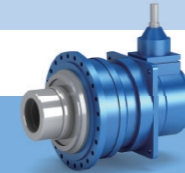
撕碎机 Shredder



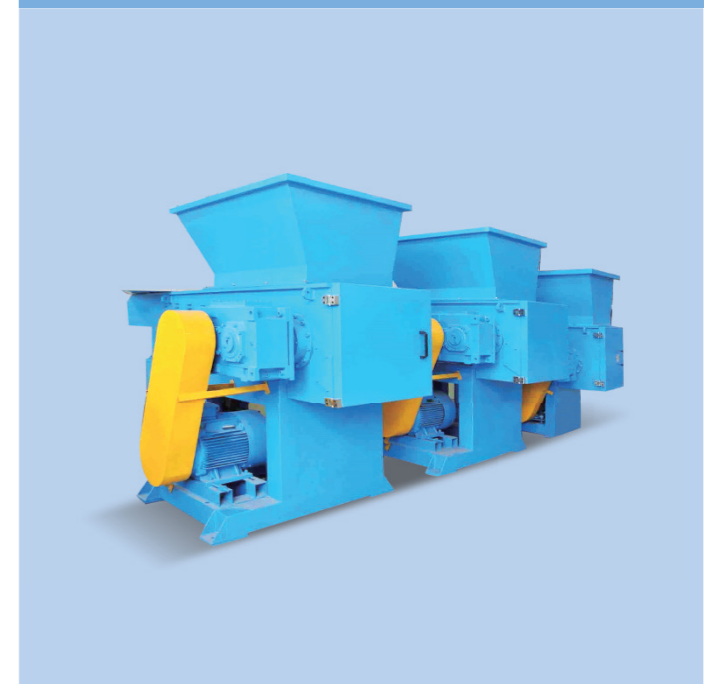
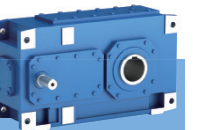
撕碎设备 Shredder Equipment



撕碎设备 Shredder Equipment



撕碎设备 Shredder Equipment



EF SERIES PARALLEL SHAFT HELICAL GEAR MOTOR

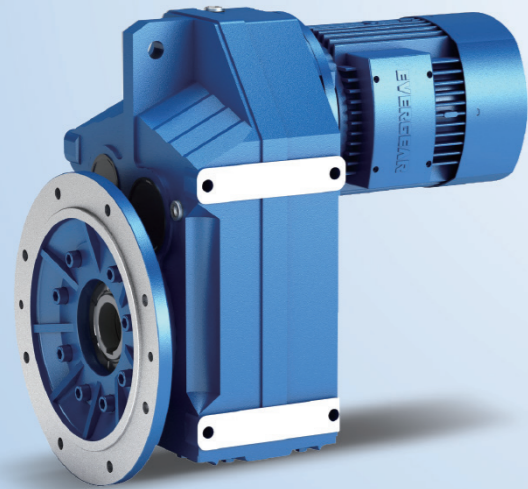
平行轴斜齿轮减速机

具有集成扭矩臂的平行轴减速电机安装和连接简便,使用经济。

功率范围从 0.18 kW 至 200 kW
10 种减速箱尺寸,最大扭矩 32000N.m
通过两级或三级传动基础设计实现高效率传动
标配高防护等级 IP65

**Parallel shaft geared motor with integrated torque arm
Easy to install and connect, economical to use.**

Power range from 0.18 kW to 200kW
10 gearbox sizes,
The maximum torque is 32000N.m
High efficiency transmission achieved through
two or three stage drive,standard design
high protection class IP65



EK SERIES HELICAL BEVEL GEAR MOTOR

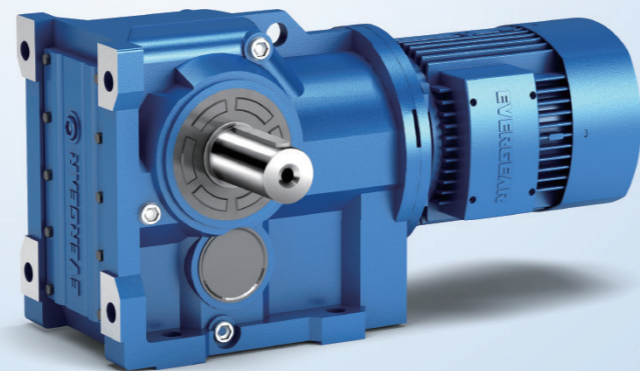
弧齿锥齿轮硬齿面减速机

高功率密度,直角输出,伞齿轮减速电机可确保高总体效率,特别是变频器驱动时。

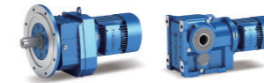
功率范围从 0.18 kW 至 200 kW
12 种减速箱尺寸,最大扭矩 50000N.m
减速箱直角输出,可带通用附件
通过三级传动基础设计实现高效率传动
标配高防护等级 IP65

**High power density, right angle output,
bevel gear motor ensures
High overall efficiency,
especially applied with frequency drive.**

Power range from 0.18 kW to 200kW
12 gearbox sizes,
The maximum torque is 50000N.m
Reducer right angle output with universal accessories
High efficiency transmission achieved through three stage
drive,standard design high protection class IP65



叠螺式污泥脱水机 Spiral sludge dewatering machine



叠螺式污泥脱水机可广泛用于市政污水处理工程以及石化、轻工、化纤、造纸、制药、皮革等工业行业的水处理系统。



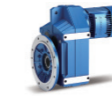
磁混凝设备 Magnetic coagulation equipment



磁混凝沉淀技术就是在普通的混凝沉淀工艺中同步加入磁粉,使之与污染物絮凝结合成一体,以加强混凝、絮凝的效果,使生成的絮体密度更大、更结实,从而达到高速沉降的目的。



砂水分离器 Sand water separator



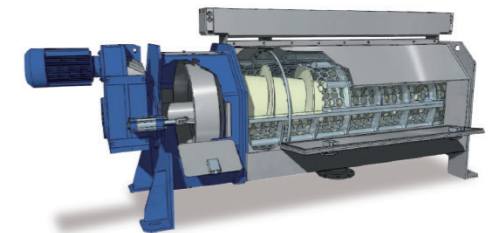
砂水分离器是沉砂池除砂系统的配套设备,其作用是将沉砂池排出的砂水混合液进行砂水分离。



螺旋压榨机 Screw press



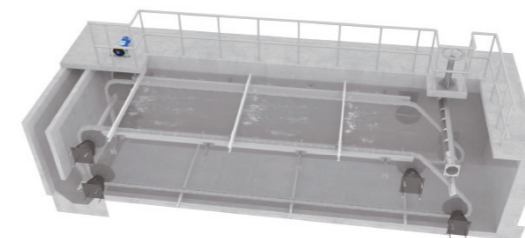
螺旋压榨机是拦污格栅的配套设备,它是由进料斗、压榨螺旋、螺旋管、排渣管和驱动装置组成。格栅捞取的栅渣或过滤后滤渣从进料斗进入螺旋管,在压榨螺旋的作用下被挤压、脱水。



链条刮泥机 Chain scraper



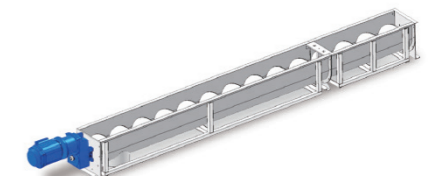
链条刮泥机由两条平行安装的封闭牵引链条带动多块刮板依次缓慢移动,刮扫隔油池表面液层和池底沉降泥层,将浮在液面上的油污从入水端连续推刮至出水端集油管中排走,将池底沉降污泥从出水端连续推刮至入水端之集泥坑中经排泥阀排走,从而完成初次机械净化污水的目的。



螺旋输送机 Screw conveyor



螺旋输送机在输送形式上分为有轴螺旋输送机和无轴螺旋输送机两种,螺旋输送机的工作原理是旋转的螺旋叶片将物料推移而进行螺旋输送机输送,使物料不与螺旋输送机叶片一起旋转的力是物料自身重量和螺旋输送机机壳对物料的摩擦阻力。



ER SERIES HELICAL GEAR MOTOR

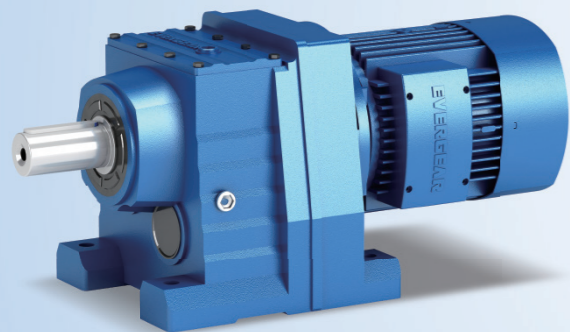
斜齿轮硬齿面减速机

紧凑和经济的同轴减速电机即使在恶劣条件下,也具有长使用寿命。

功率范围从 0.18 kW 至 200 kW
13 种减速箱尺寸,最大扭矩 32000N.m
安装方式灵活多样
通过两级或三级传动基础设计实现高效率传动
标配高防护等级 IP65

Compact and economical coaxial geared motor even in bad weather conditions, it also has a long service life.

Power range from 0.18 kW to 200 kW
13 gearbox sizes, maximum torque 32000N.m
Various installation ways
High efficiency transmission achieved through two or three stage drive, standard design
high protection class IP65



ES SERIES HELICAL-WORM GEAR MOTOR

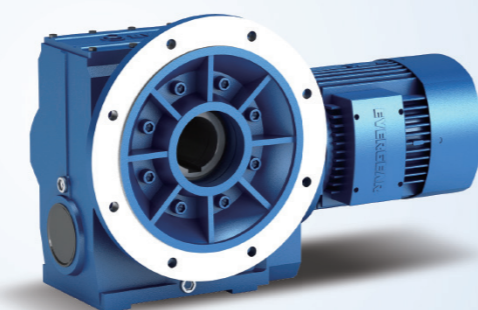
蜗轮蜗杆减速机

用途广泛,减速箱直角输出,斜齿轮硬齿面 - 蜗轮蜗杆减速机电机工作平稳,为诸多设备的驱动提供可靠保障。

功率从 0.12kW 至 22kW
7 种减速箱尺寸,最大扭矩 4200Nm,
通过两级传动基础设计实现高效率传动
标配高防护等级 IP65

Wide range of applications, right angle output of gearbox, helical gear hard surface - worm gear motor works smoothly, providing reliable protection for many equipment drives

Power rang from 0.12kW to 22kW
7 gearbox sizes, maximum torque 4200Nm,
High efficiency transmission achieved through two stage drive, standard design high protection class IP65



搅拌系列设备 Mixing equipment

搅拌设备是一种用途广泛,保证物料的有效混合;消耗最少的功率;所需费用最低;操作方便;易于维修。

带式压滤机 Belt pressure filter



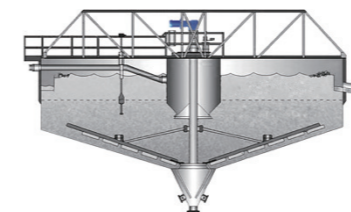
带式压滤机带式压榨过滤机脱水过程可分为预处理、重力脱水、楔形区预压脱水及压榨脱水四个重要阶段运用全新型设备过滤程控自动厢式压滤机、隔膜压滤机、深度污泥脱水压滤机、一体化污水污泥处理设备、在线精密过滤系统等价格合理、性能可靠的环保过滤产品。



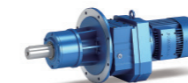
刮泥机 Mud scraper



刮泥机,是一种将淤泥从河道里清理出来的一种机器,用于城市污水处理厂、自来水厂以及工业废水处理中直径较大的圆形沉淀池中,排除沉降在池底的污泥和撇除池面的浮渣。



双曲面搅拌机 Hyperboloid mixer



双曲面搅拌机也叫具有双层叶轮的曝气搅拌装置.双曲面叶轮体上表面为双曲线母线绕叶轮体轴线旋转形成的双曲面结构。其独特的叶轮结构设计,最大限度地将流体特性与机械运动相结合。



气浮设备 Flotation equipment



气浮设备是一类在水中通入或产生大量的微细气泡,使空气以高度分散的微小气泡形式附着在悬浮物颗粒上,造成密度小于水的状态,利用浮力原理使其浮在水面,从而实现固-液分离的水处理设备。



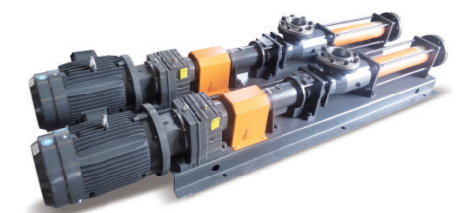
机械格栅 Mechanical grille



机械格栅是一种可以连续自动拦截并清除流体中各种形状杂物的污水处理专用设备,可广泛地应用于城市污水处理、自来水行业、电厂进水口,同时也可以作为纺织、食品加工、造纸、皮革等行业废水处理工艺中的前级筛分设备,是我国最先进的固液筛分设备之一。



单螺杆泵 Single screw pump



HC-DLJ74

弧齿锥齿轮硬齿面减速机
SERIES HELICAL
BEVEL GEAR MOTOR

输入功率范围:

0.12 ~ 4kW

速比范围:

268 ~ 566

许用转矩:

1550Nm.

Input power range:

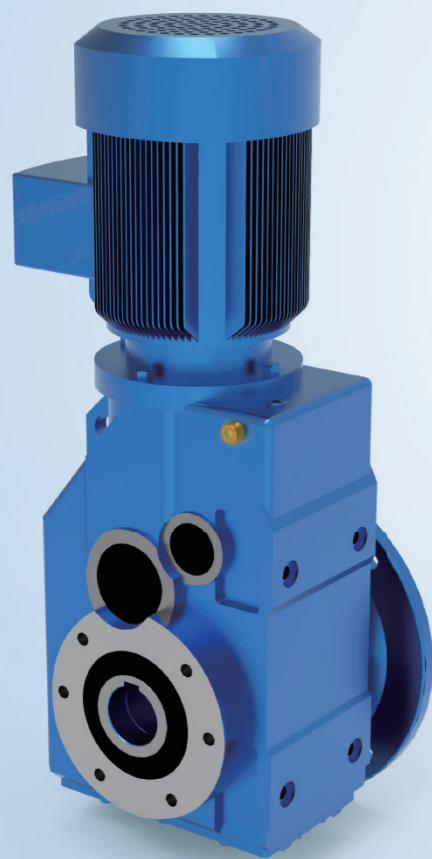
0.12~4kW

Speed ratio range:

268~566

Permissible torque:

1550Nm.



HC-DLJ86

弧齿锥齿轮硬齿面减速机
SERIES HELICAL
BEVEL GEAR MOTOR

输入功率范围:

0.18 ~ 5.5kW

速比范围:

259 ~ 651

许用转矩:

2700Nm.

Input power range:

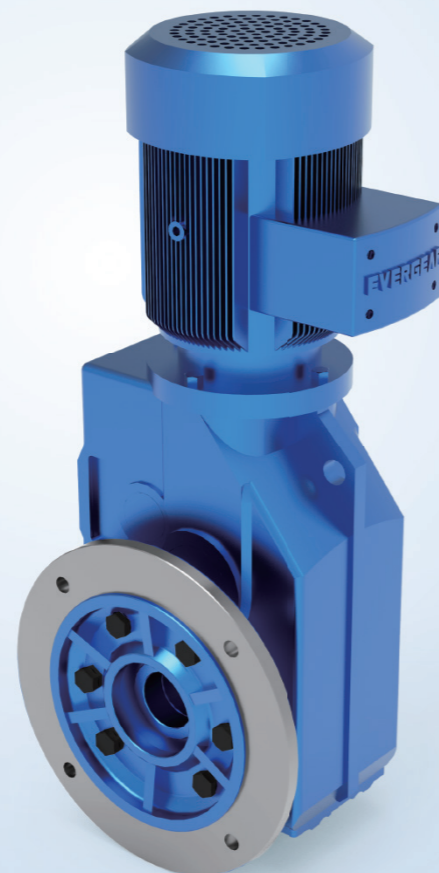
0.18~5.5kW

Speed ratio range:

259~651

Permissible torque:

2700Nm.



HC-DLJ97

弧齿锥齿轮硬齿面减速机
SERIES HELICAL
BEVEL GEAR MOTOR

输入功率范围:

0.37 ~ 11kW

速比范围:

285 ~ 772

许用转矩:

4300Nm.

Input power range:

0.37~11kW

Speed ratio range:

285~772

Permissible torque:

4300Nm.

水和污水处理传动方案

WATER AND SEWAGE TREATMENT TRANSMISSION SCHEME

- 粗细格栅设备传动 (平行轴减速机 / 弧齿锥齿轮减速机)
- 筛洗 / 砂水分离设备传动
- 搅拌设备传动 (同轴减速机法兰安装)
- 沉淀浓密设备传动 (弧齿锥齿轮减速机 / 大功率平行轴减速机)
- 转碟曝气设备传动
- 螺旋输送设备传动
- 螺杆泵设备传动

Coarse and fine grid equipment transmission (parallel shaft reducer/Series Helical Bevel Gear Motor)
Screen washing/sand water separation equipment transmission
Mixing equipment transmission (flange installation of coaxial reducer)
Precipitation thickening equipment transmission (Series Helical Bevel Gear Motor/high-power parallel shaft reducer)
Disc aerator drive
Screw conveyor transmission
Screw pump equipment transmission



污泥处理传动方案

SLUDGE TREATMENT TRANSMISSION SCHEME

- 污泥叠螺脱水设备传动
- 干化 / 干燥设备传动
- 压滤设备传动
- 刮泥机设备传动
- 泥饼破碎设备传动
- 皮带输送 / 螺旋输送设备传动

Sludge stacking screw dewatering equipment transmission
Drying/drying equipment transmission
Filter press transmission
Mud scraper equipment transmission
Mud cake crushing equipment transmission
Belt conveyor/screw conveyor transmission



固废处理传动方案

SOLID WASTE TREATMENT TRANSMISSION SCHEME

- 离心设备传动
- 磁选设备传动
- 废料破碎设备传动 (塑胶粉碎机, 立式破碎机, 单轴破碎机, 双轴破碎机, 四轴破碎机)
- 倾角输送设备传动
- 生活垃圾破碎分选线传动
- 废旧塑料破碎清洗线传动
- 家电回收生产线传动
- 动力电池回收生产线传动
- 城市固废垃圾回收设备传动

Centrifugal equipment transmission
Magnetic separation equipment transmission
Waste crushing equipment transmission (plastic crusher, vertical crusher, single-axis shredder, Two-axis shredder, four-axis shredder)
Inclination conveyor transmission
Household garbage crushing separation line transmission
Waste plastic crushing and cleaning line drive
Household appliance recycling production line transmission
Power battery recycling production line transmission
Urban solid waste recycling equipment transmission



特点和优势

CHARACTERISTICS AND ADVANTAGES

1. 速比划分细

满足各种高低速运转需求

BIG RANGE OF REDUCTION RATIO AVAILABLE

Satisfy all kinds of high and low speed operation requirements

2. 高效节能

为您提供节能型三相电机，它不仅将为您提供卓越的效率，同时运行成本被大大降低



HIGH EFFICIENCY AND ENERGY SAVING

Provide you with energy-saving three-phase motor. It will not only provide you with excellent efficiency, At the same time, the operation cost has been greatly reduced.

3. 优质齿轮

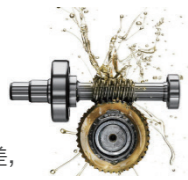
作为享誉全国的齿轮减速机专业制造商，齿轮材质选用高强度低碳合金钢，经渗碳淬火和抛丸磨削，齿面硬度为 HRC58-62，芯部硬度为 HRC32-38。精度达到 6 级。



除此之外，我们与全国知名的轴承厂商“哈瓦洛”等精诚合作，选择满足设计要求的轴承，确保减速机整体品质

HIGH QUALITY GEARS

As a well-known professional manufacturer of gear reducer in China, The gear material is high strength low carbon alloy steel. After carburizing, quenching and shot blasting grinding, The hardness of the gear surface is HRC58-62. The core hardness is HRC32-38. The accuracy is up to 6 levels. Besides, We cooperate with "HRB", "ZWZ", "LYC", a well-known bearing manufacturers in China. Select bearings that meet the design requirements. Ensure the overall quality of reducer



4. 专业润滑

不同的季节，以及白天和夜晚的温差，都会导致减速机润滑油膨胀和冷却，从而使减速机的油位调节显得非常重要，恒齿公司在污水处理专用减速机上配置了膨胀油杯，确保对减速机良好润滑。

PROFESSIONAL LUBRICATION

Different seasons and temperature differences between day and night, It will lead to the expansion and cooling of the reducer lubricating oil. So it is very important to adjust the oil level of the reducer. EVERGEAR has installed expansion oil cup on the special reducer for sewage treatment. Ensure good lubrication for reducer.

5. 加强支撑

对于转碟转刷单支撑曝气机，恒齿提供了在输出轴上采用加强型支撑的专用减速机，以确保曝气机正常可靠运行。

TO STRENGTHEN THE SUPPORT

For the single support aerator for rotating disc and brush, EVERGEAR are provided on the output shaft Special reducer with reinforced support, To ensure the normal and reliable operation of the aerator.



6. 专业设计

对于倒伞式曝气机，为保证最佳的充氧效果，恒齿对其专用减速机在结构上进行改进，使其根据污水处理池污水液面高低而自动调整倒伞叶轮浸没污水深度，使污水大面积与空气接触，使空气中氧分子迅速溶入污水中，使污水净化更加彻底

PROFESSIONAL DESIGN

For the inverted umbrella aerator, in order to ensure the best oxygenation effect, The structure of the special reducer is improved by EVERGEAR. Make it according to the level of sewage level of sewage treatment tank And automatically adjust the immersion depth of the inverted umbrella impeller, Large area of sewage and air contact, Make the oxygen molecules in the air quickly dissolve into the sewage, Make sewage purification more thorough

8. 安全密封

污水处理专用减速机的输出轴上的密封，采用双油封形式，避免漏油的发生。

SECURE SEAL

Sewage treatment special reducer The seal on the output shaft is in the form of a double oil seal. Avoid oil leakage.



9. 防爆需求

EXPLOSION-PROOF

10. 满足伺服驱动控制

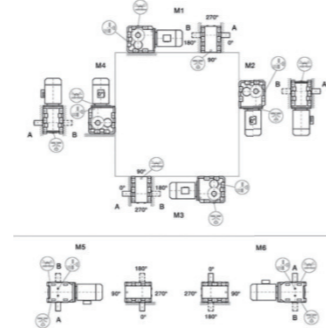
SERVO DRIVE CONTROLLING AVAILABLE

11. 安装形式多样方便

VARIOUS INSTALLATION POSITION IS AVAILABLE

满足环保设备安装要求，大大提高了设备的自由度

Meet the installation requirements of environmental protection equipment, Greatly improve the freedom of equipment



7. 防腐处理

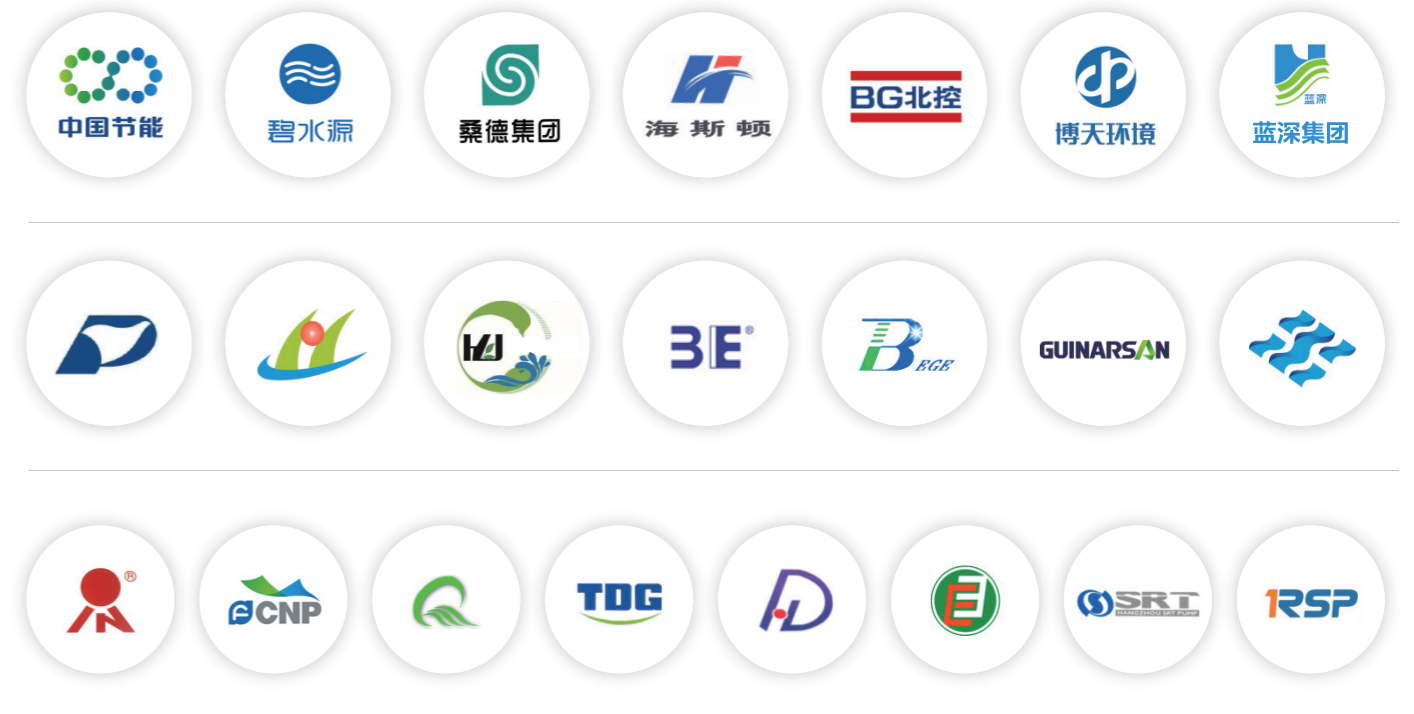
减速机长期运行在腐蚀性环境，其内外表面都做了特殊的防腐处理，电机采用的防护等级为 IP55 以上防腐电机，其防雨罩做喷塑处理。

ANTICORROSION

Long term operation of reducer in corrosive environment, Its inner and outer surfaces are treated with special anticorrosion, The protection grade of the motor is over IP55, Its rainproof cover does spray model processing.

行业业绩

INDUSTRY PERFORMANCE



客户案例

CUSTOMER CASE

